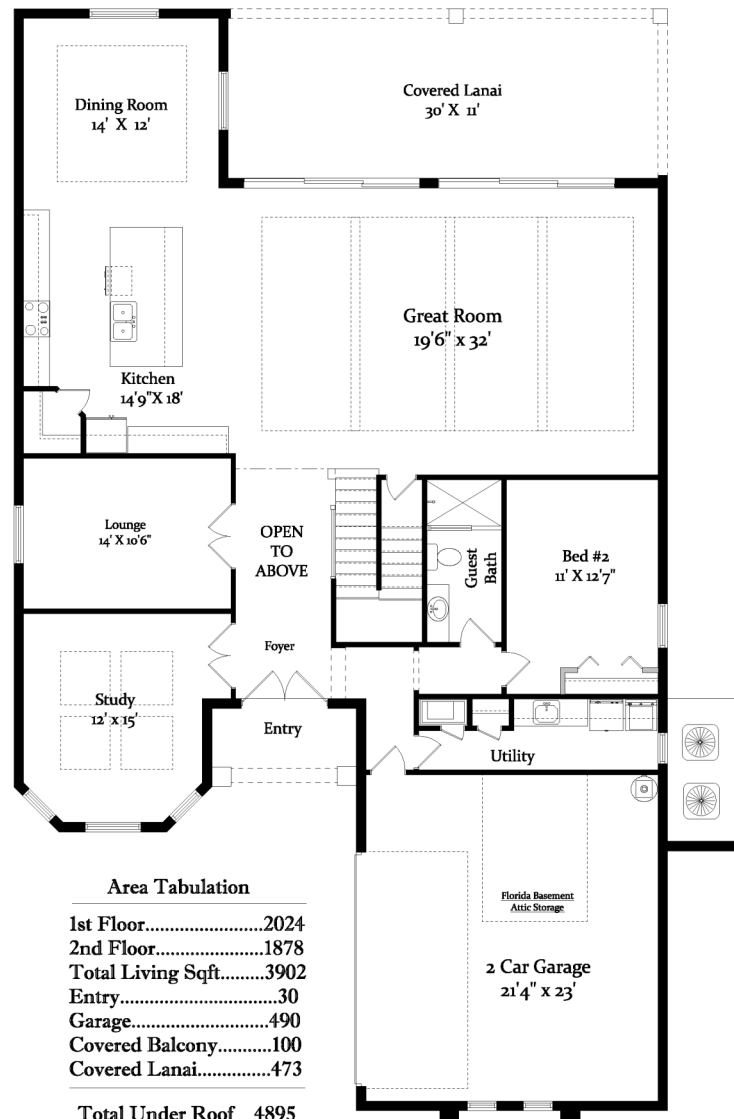
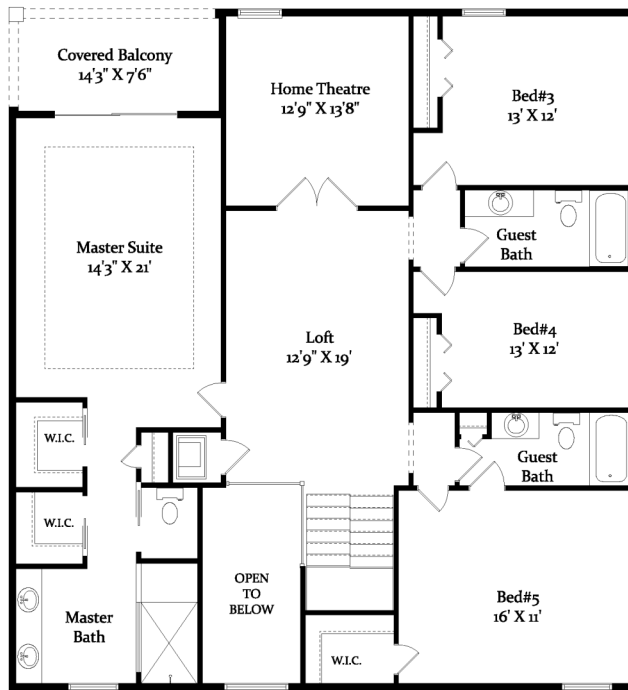




"The Madrid"

386.313.6221 [www.GoldCoastCustomHomes.com](http://www.GoldCoastCustomHomes.com)



"THE MADRID"



Area Tabulation

1st Floor.....	2024
2nd Floor.....	1878
Total Living Sqft.....	3902
Entry.....	30
Garage.....	490
Covered Balcony.....	100
Covered Lanai.....	473

Total Under Roof 4895

CGC1507791 Gold Coast Custom Homes © 2021 All Photographs, elevation renderings, floor plans and square footages are for representation purposes only and may not reflect the exact dimensions or features of your home. All dimensions, floor plans, elevations, square footages, features, specifications, prices and product types are subject to change without notice or obligation. All Gold Coast Custom Homes floor plans and elevations may be subject to copyright protection. Any reproduction or use of this brochure material without written permission from Gold Coast Custom Homes is strictly prohibited.