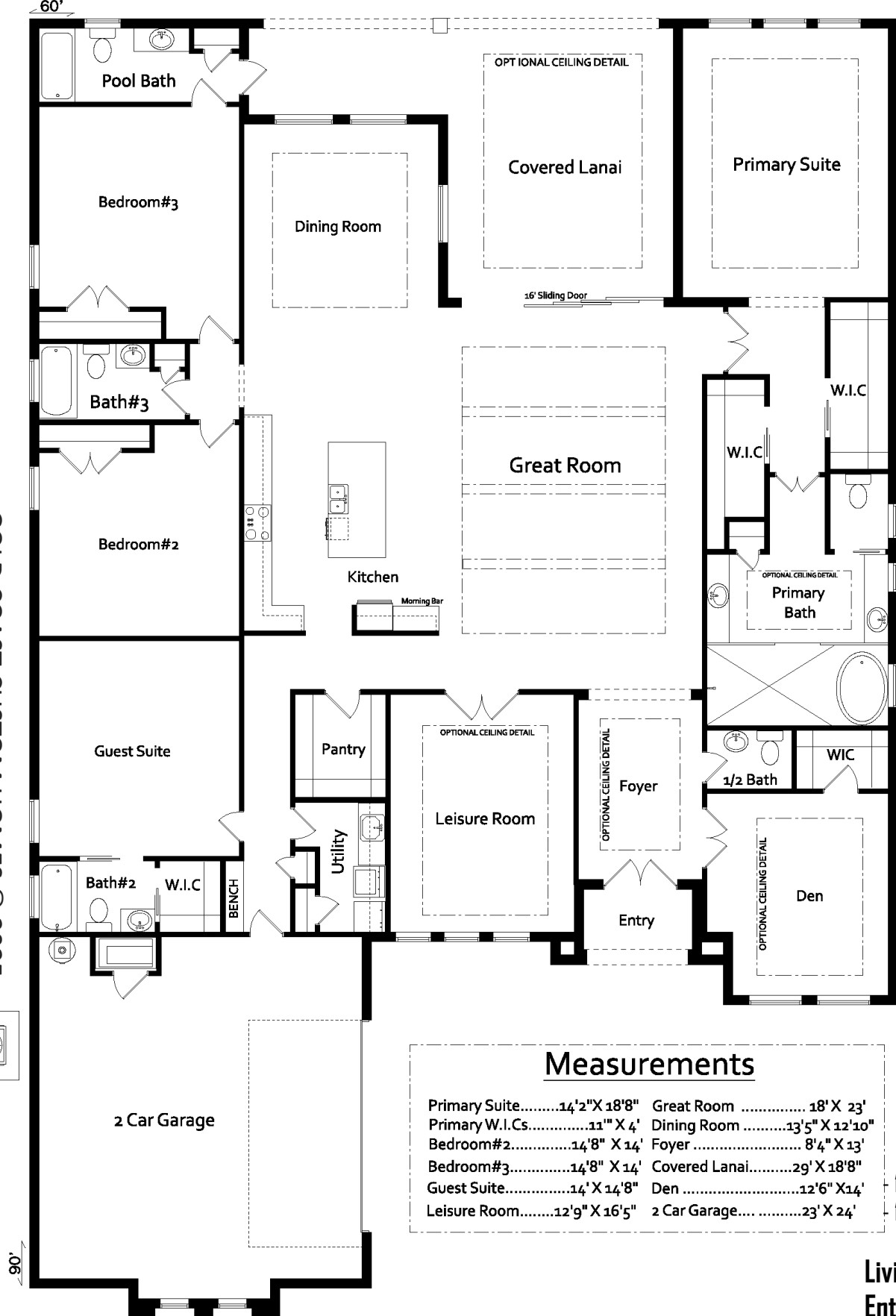




"The Isabella II"

386.313.6221 [www.GoldCoastCustomHomes.com](http://www.GoldCoastCustomHomes.com)

GOLD COAST CUSTOM HOMES © 2025



Measurements	
Primary Suite.....	14'2" X 18'8"
Primary W.I.Cs.....	11" X 4'
Bedroom#2.....	14'8" X 14'
Bedroom#3.....	14'8" X 14'
Guest Suite.....	14' X 14'8"
Leisure Room.....	12'9" X 16'5"
Great Room .....	18' X 23'
Dining Room .....	13'5" X 12'10"
Foyer .....	8'4" X 13'
Covered Lanai.....	29' X 18'8"
Den .....	12'6" X 14'
2 Car Garage.....	23' X 24'

Ceiling Heights  
 10'+ Ceilings In Bedrooms  
 12' -13' Ceilings In Main Areas

Living Sqft.....3450  
 Entry.....45  
 Garage..... 600  
 Covered Lanai..... 412  
 Total Sqft..... 4507

# "The Isabella II"



Gold Coast Custom Homes © 2025 All Photographs, Elevation Renderings, Floor Plans and Square Footages are for representation purposes only and may not reflect the exact dimensions or features of your home. Dimensions, Floor plans, Elevations, Square Footages, Features, Specifications, Prices and Product types are subject to change without notice or obligation. All Gold Coast Custom Homes Floor plans and Elevations ARE COPYRIGHT PROTECTED Any reproduction or use of this brochure without written permission from Gold Coast Custom Homes is strictly prohibited.